

Stand 08/02

**FLYBACK**  
**Wide input range 1:2**

**INDUSTRIAL**  
**DC/DC Converters**  
**PWM - regulated**

**10 Watt**

**Series:**  
**523 /DLIW2**  
**523S/DLIW2**

**Electrical specifications:**

Ambient temperature: -40°C to +71°C  
 Operating temperature: max. +105°C  
 Output voltage accuracy: +/- 2%  
 Line regulation: +/- 0,2%  
 Load regulation: +/- 1%  
 Efficiency: min. 65%  
 Short circuit protection: full protection

Output Ripple & Noise: typ. 150mVp-p  
 @ 1kV isolation voltage  
 Insulation test voltage: 1000V DC  
 Insulation test voltage Part-Nr. /3: 3kV AC rms  
 Part-No. /5 External -IN & -OUT / COM connection allowed

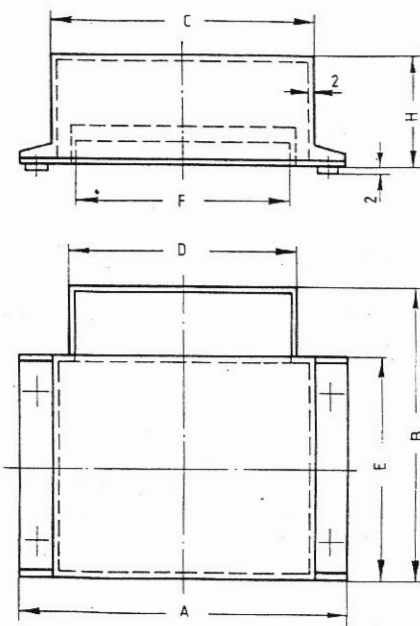
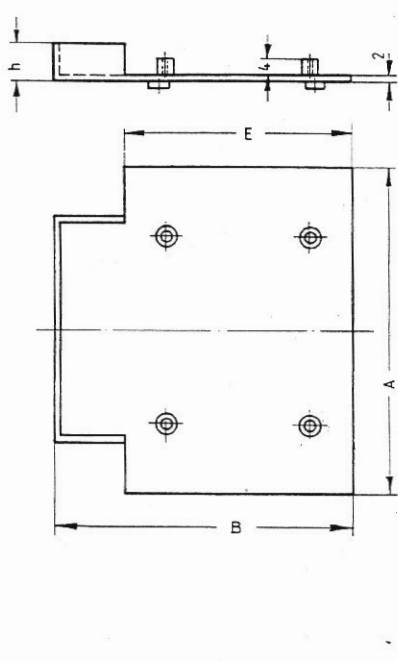
This part includes input- and output filtering acc. to EN 55011/22 Class B

**523S:**  
 Input polarity protection with diode in series to input  
 Converter will not get damaged if Vin below 36V

**CAUTION NO INPUT POLARITY CHANGE ALLOWED!**

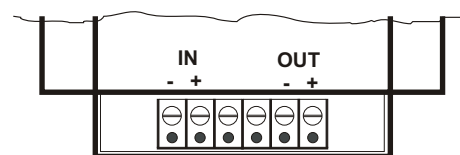
Part - No. Single	Input Voltage DC	Output Voltage	Output Current
523/DLIW2-4805 523/DLIW2-4812	(36-72V)	5V	2000mA
523S/DLIW2-4805 523S/DLIW2-4812		12V	833mA

Any other input and output voltage available.



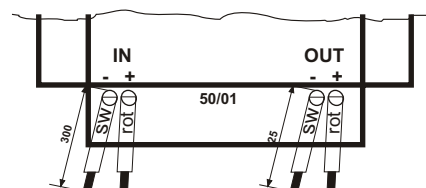
ALL DIMENSIONS IN MM  
 MILLIMETERS +/-0,25mm  
 A = 98; B = 88; C = 80;  
 D = 68; E = 67; F = 63;  
 H = 31; h = 1,5

**523S:**



Connection via terminal strips

**523:**



Leitungsquerschnitt = 1,0mm<sup>2</sup>

Specification may be changed without notice  
 please contact office for verification

We can offer EMC - Filter  
 according to EN55011/22 Class B.